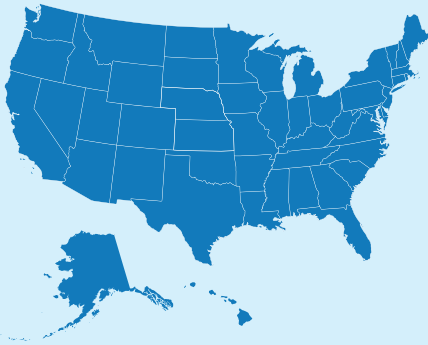


Why you could depend on Fujifilm Service

Where can Fujifilm Service printers?



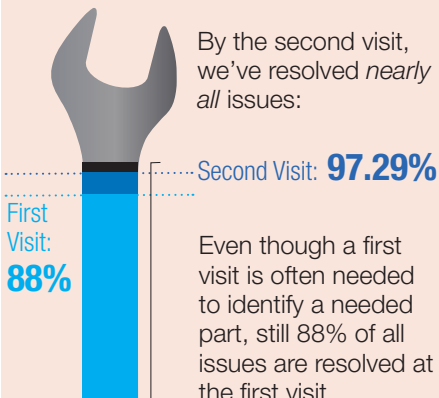
Yes, that's a map of the *entire* United States, because we can meet an end-customer's required SLAs in

100% of the United States.

How many end-customer locations do we service?



What's our fix rate?



What printing equipment can we service?

- Multifunction & single-purpose
- Color and black & white
- Specialty & non-specialty
- Thermal, impact, laser, dye-sub, 3D and inkjet
- Wide format & wider format & not-so-wide
- Card, label, fine art, kiosk, direct-to-garment, vehicle, proofing, GIS, packaging
- Office, production, commercial, industrial
- AND MORE

The fact is, Fujifilm Service already works on a very wide variety of printers from a wide variety of manufacturers.

If we don't already work on your brand, chances are, we could.

Brands:

AGFA • AVERY DENNISON • CANON • COMPUPRINT • EFI • EPSON • FUJITSU • HEWLETT PACKARD • HITACHI • KONICA/MINOLTA • KYOCERA • LEXMARK • MITSUBISHI • MUTOH • OCÉ • OKI-DATA • OLYMPUS • PANASONIC • PRINTEK • PRINTRONIX • RICOH • RISO • SAMSUNG • SATO • SHARP • SID • TEC • TOSHIBA • VIDEOJET • XEIKON • ZEBRA

What does Fujifilm Service do?

Pick the services you need. Our agreements are highly customized. We have the training, parts and labor to provide services along the entire lifecycle of an end-customer's printers:

- Site preparation
- Installation
- Help Desk
- Training
- Preventive maintenance and updates
- Break/Fix repairs
- End-of-life services, such as refurbishment and parts salvage
- And more



How much can our Help Desk handle?

Over **268,450** Calls In 2015

Help Desk services can be contracted for the hours and days you need. Flexible hours are even available – for instance, if you need better coverage during holidays.



70% of the time, one Help Desk call resolves a customer's problem.

How fast can you get a part out?



Ordered by
6:00 pm



Delivered next day
– early morning
options available

Typically, if ordered by 6 pm we can have a part delivered the next day – with early-morning delivery options often available.

How long has Fujifilm Service been doing this?

Born in 1983 – that’s when we realized that the extraordinary nationwide team supporting Fujifilm photographic printers could turn its expertise to other types of printers as well.

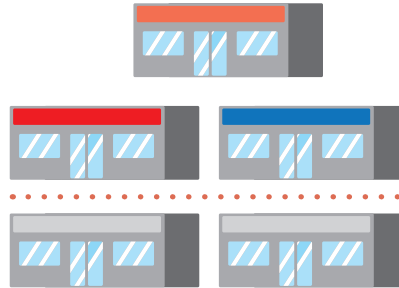
For 33 years, Fujifilm Service has been supporting some of the largest names in retail and currently provides service in many of the country’s largest companies. We’re in mid-sized companies, too.

How many of our service technicians exclusively service Fujifilm customers?



That’s right. Fujifilm has built a nationwide technical force of highly trained printer service technicians – who receive regular training.

3 of the top 5 US retailers depend on Fujifilm Service.



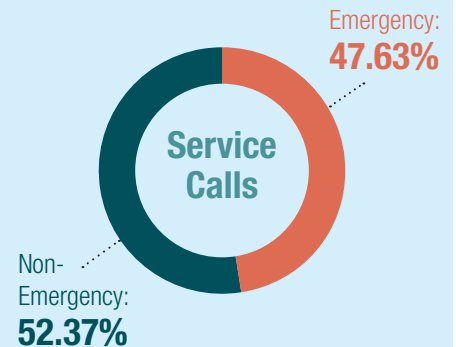
For more than 10 years, Fujifilm Service has worked with a wide variety of printer manufacturers and resellers, providing services across the entire lifecycle of supported printers.

“We simply don’t get complaints from our customers about Fujifilm Service”

– Katie Rankine of Data Sales, a company that leases equipment to a wide range of companies across the US, including Fortune 500 companies

Can you handle a high volume of emergency calls?

Almost half of the service calls we handle are emergencies for end-customers. We’re dedicated to quick resolution because no organization can afford to have critical print equipment sitting idle.



Call us toll free:
844-289-6537



Depend on Fujifilm Service if you seek a competitive solution to augment your existing service staff, expand the geographic territory you service, grow your current service/support offering for in- and out-of-warranty printers, or even completely outsource your field service and support operation. Since 1983, Fujifilm Service has been supporting some of the largest names in retail and currently provides service in many of the country’s largest companies.

Learn how Fujifilm Service could help you by going to www.fujifilm-service.com or call us toll free at **844-289-6537**